

1

Turn Off the Power

- **Isolate the Power Source:** Ensure the watermist pump is completely isolated from the power supply. This can be done by switching off the relevant circuit breaker or disconnecting the electrical isolator.
- **Lockout/Tagout (LOTO):** Apply lockout/tagout procedures to prevent accidental re-energising of the system. Place a physical lock and a visible tag on the power source, indicating that maintenance is ongoing and the system should not be powered on.
- **Verify Power is Off**
- **Test for Voltage:** Use a multimeter or a non-contact voltage tester to confirm that no voltage is present at the pump terminals or the electrical supply points.

The purpose of this document is to provide instructions for replacing the float switch on the iCO high pressure pump.

This should only be carried out by an iCO approved installer.

2

Close water supply off at the inlet valve



3

Remove pump enclosure

- Remove the two screws from the outer cover. One either side, bottom-front. See red arrow.
- Place hands on cover sides, lift and pull away.



4

Take off the electronics board enclosure

- Undo the two screws from the PCB cover. One either side, bottom position. See red arrow. (Note the screws are retained and will remain in the panel)
- Place hands on cover sides, lift and slide upwards, pull away.



5

Disconnect float switch from PCB

- Unscrew the terminal screws on the highlighted connector block and remove the wires.



6

Disconnect the float switch bracket from underneath the rear manifold

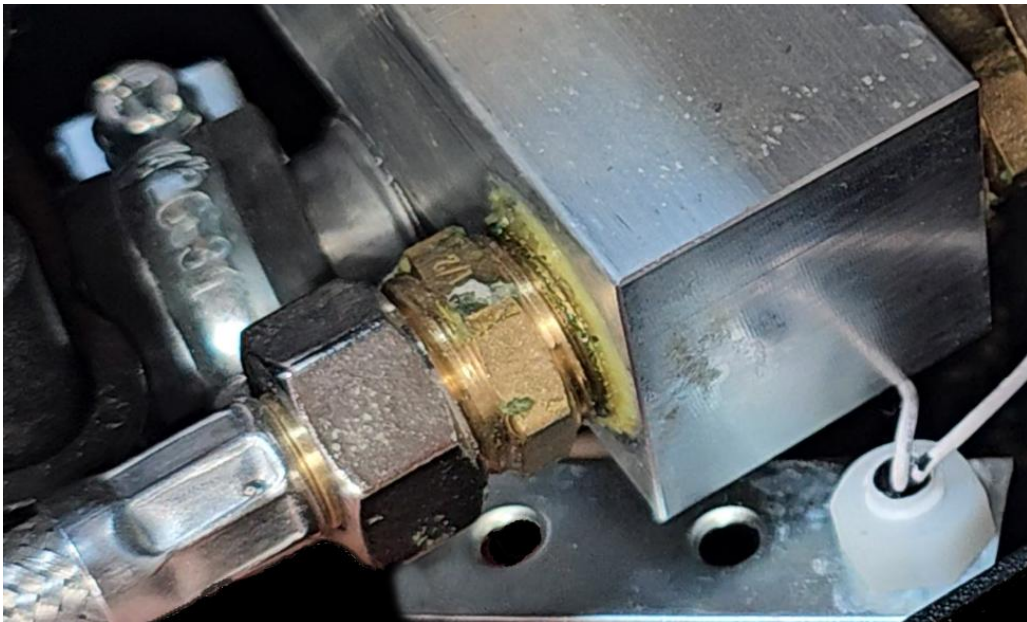
- Unscrew the bracket screw.



7

Disconnect the float switch from the bracket, withdraw from case

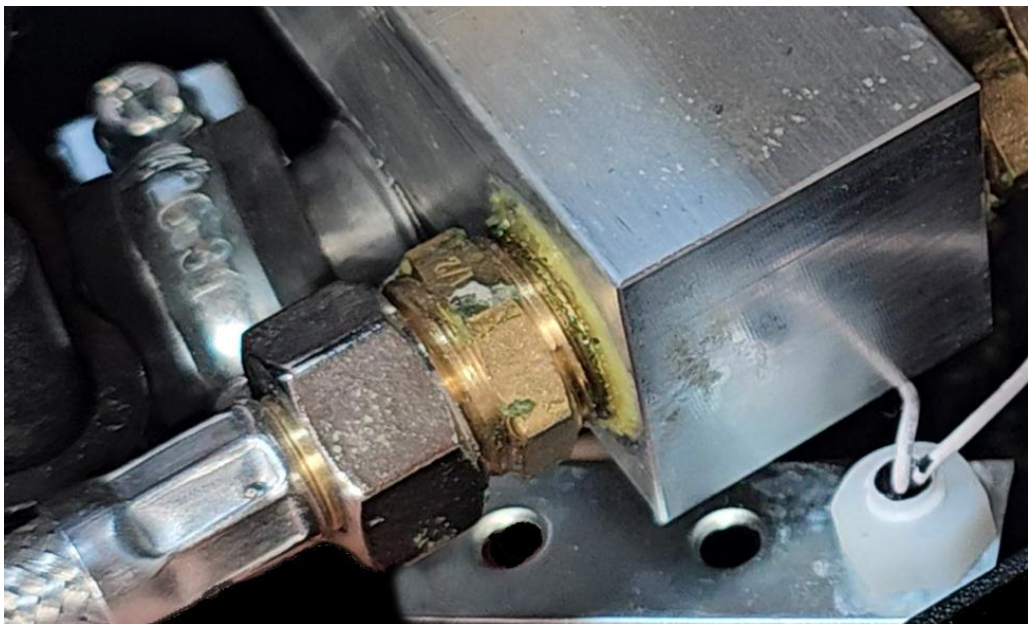
- Detach the bracket from the pump and withdraw bracket and float switch.



8

Place the new float switch, attach to bracket

- Insert the new float switch attached to the bracket into the pump.



9

Secure bracket under rear manifold

- Insert and tighten the bracket screw



10

Connect new float switch to PCB

- Insert the float switch wires into the terminal block and tighten the terminal screws.



11

Recommission pump and system

- Complete self test
- Check for any leaks



12

Test operation of float switch by manually actuating it with finger

- Actuate the float switch with a finger.



13

Reset pump by holding down stop button for 15 seconds

- Hold down stop button for 15 seconds to reset the pump.



14

Refit all enclosures

- Refit the PCB cover.
- Refit the pump cover.



A smarter and safer means to protecting lives and property from fire.

iCO Products is LPCB ISO 9001 accredited for the design, manufacture, assembly, and testing of residential fire suppression products.

Our patented fire suppression products are manufactured in the UK and sold through a network of accredited installers and distributors throughout the UK and overseas.


Patents granted: United Kingdom, USA, Australia, Europe


Patents pending: UAE

Contact us

 enquiries@ico-products.com

 ico-products.com

 [@ico-products](https://www.linkedin.com/company/ico-products)

 iCO Products
Park House
10 Park Street
Bristol
BS1 5HX



iCO Products is a member of the Fire Industry Association and an ISO 9001 registered company.

We reserve the right to update or modify any information. All values, information, images and illustrations in this brochure, data sheets and all other publications are exemplary and are subject to on-going changes and updates.

