



ICO® High Pressure Pump V2

Technical Datasheet

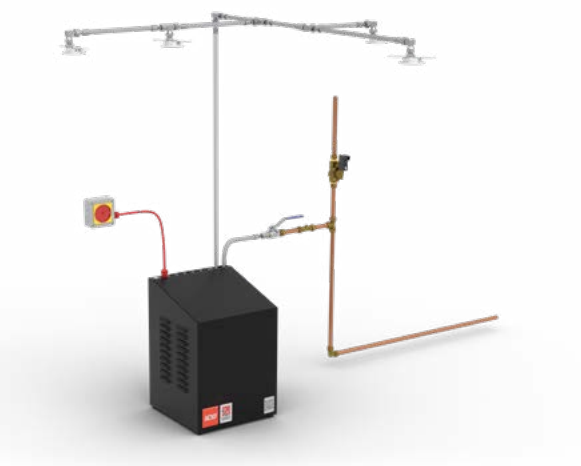
Technical Data

Part No:	PU001-00
Dimensions:	342mm (W) x 342mm (D) x 495mm (H)
Clearance requirement:	100mm of clear space required around on each side for ventilation
Voltage rating:	240V
Current rating:	13A
Power Supply Connection:	Dedicated 16A fused supply from the NON RCD side of the board. Fire rated cable required
Inlet connection:	1/2" BSP
Outlet connection:	3/8" BSP 60° Cone
Water requirement:	12 lpm @ 1 bar Minimum
Pump run sound pressure level:	79db @ 1m
Pump run Flow switch:	0.5lpm
Weight:	24kg
Serviceability Access:	Removable front cover with security screws
Internal Components:	Corrosion resistant brass and stainless steel
Mounting:	Floor or wall mount
Standing Pressure:	Mains water pressure 1-10 bar
Running Pressure:	Adjustable 10-100 bar
Mains low pressure monitoring:	Set at 0.5 bar
Mains water over pressure protection:	Pressure relief set at 10bar
Pump run time:	10 minutes or 30 minutes (adjustable with pump and actuated ball valve shut off)
Operation:	Wet type or pre-action linked to smoke detection
Self-test:	Monthly self-test
Heat protection:	Thermal fuse set at 100°C

Technical Data

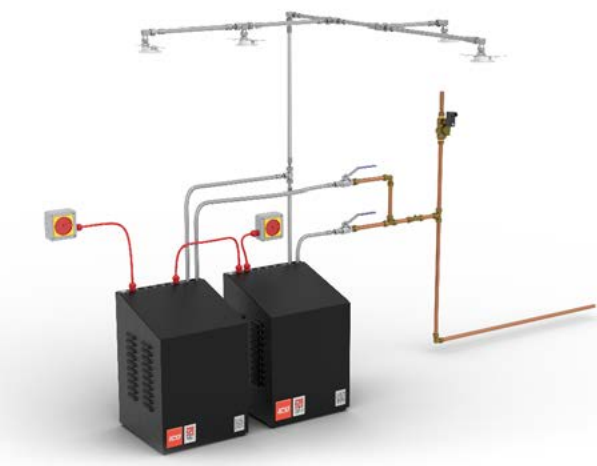
Fire relay:	2x NO / NC volt free 30vDC 1 A
Fault relay:	2x NO / NC volt free 30vDC 1 A
Priority demand valve output:	12v 1A
Power out:	12v 1A
Power monitoring:	Battery backed up audible alarm for fault monitoring
Battery monitoring:	Check every 8 minutes if battery is detached
System indication:	Internal LCD display
Control valve:	Integral isolation valve, drain valve & pressure gauge
Strainer:	Internal 500 micron filter
IP Rating:	IP53
Manual controls:	Internal and external manual start and stop button

Installation



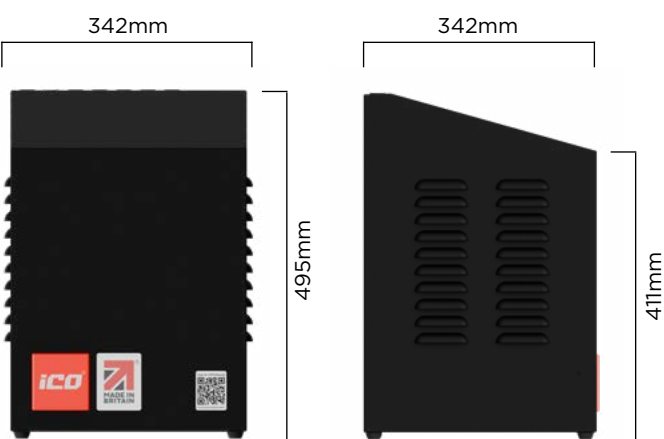
Typical domestic category installation.

NOTE: All images in this document are for illustration purposes only.

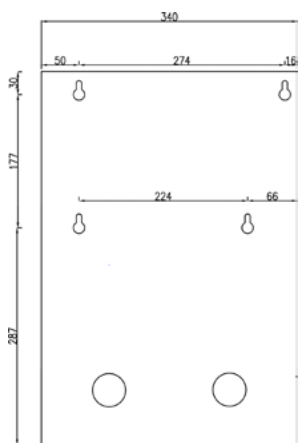


Typical residential category installation.

Dimensions

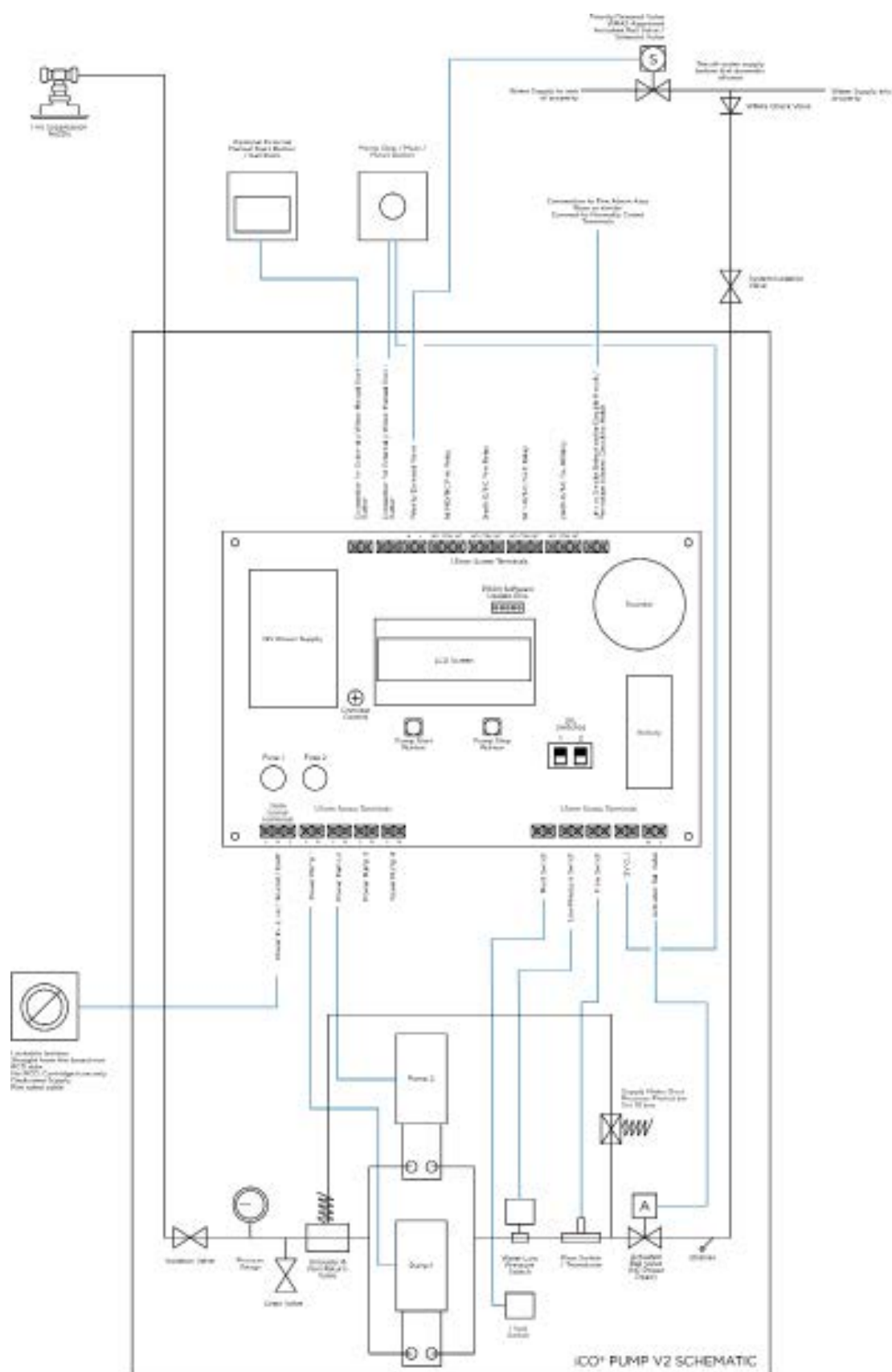


Wall Mount Details



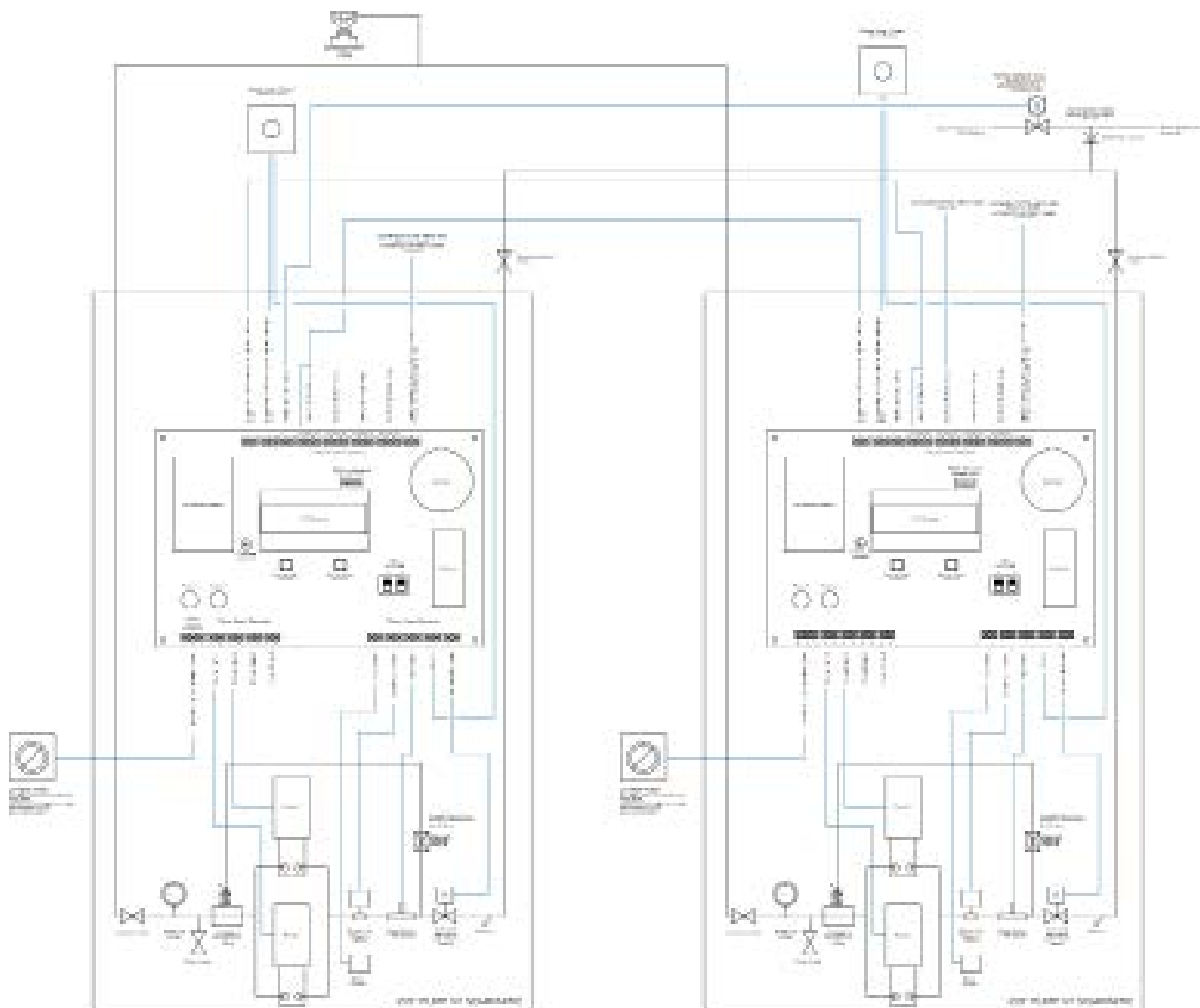
Technical Pump Schematic (Domestic)

Private homes, heritage or listed buildings and new-build properties.



Technical Pump Schematic (Residential)

Apartment blocks, care homes, student accommodation, hotels and other HMOs (houses in multiple occupancy).

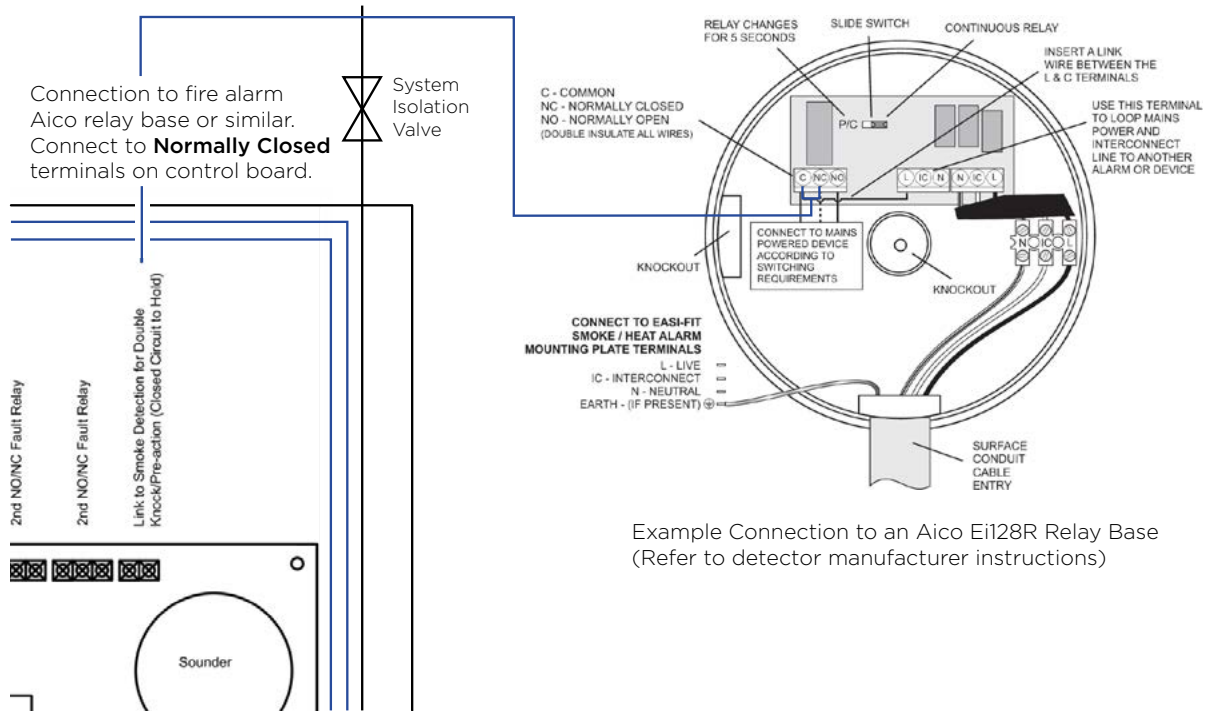


Installation and Comissioning

The diagram below shows the wiring connection between an Aico Ei128R relay base and the smoke detection.

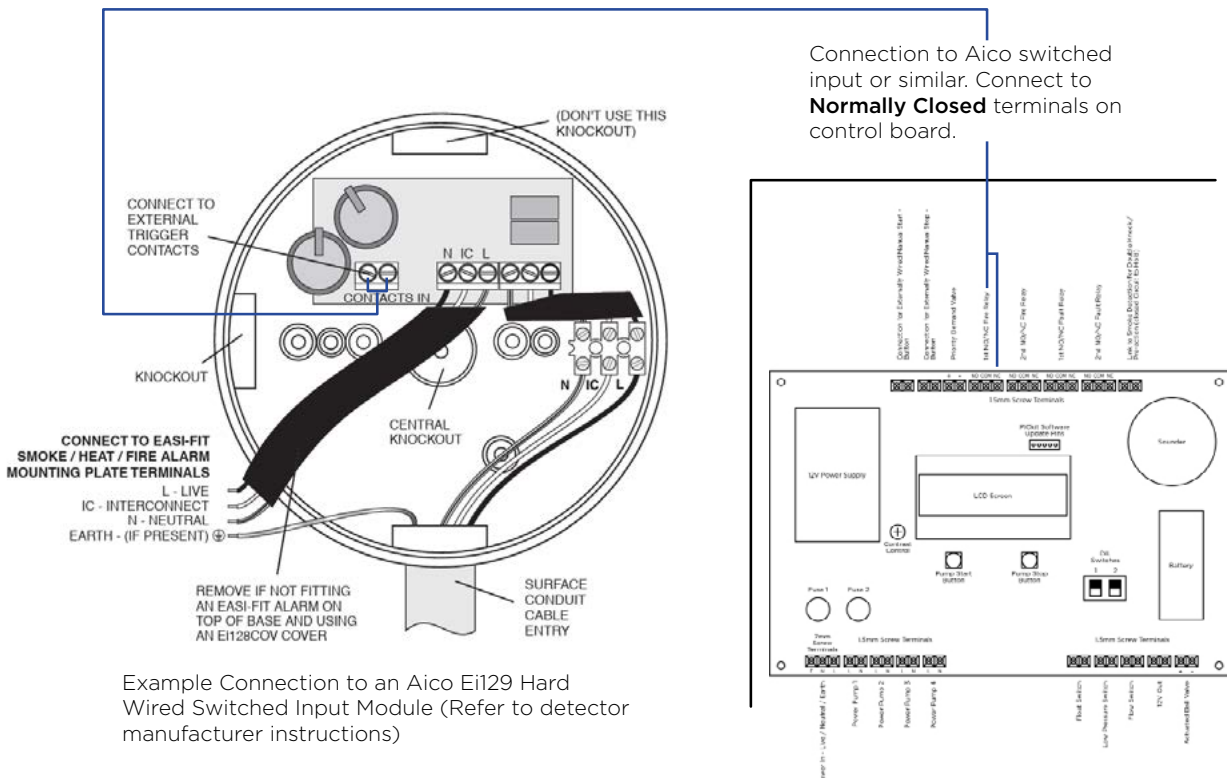
The smoke detection connection requires a volt free contact to a normally closed relay (going open on fire alarm operation). NEVER PUT A VOLTAGE INTO THESE TERMINALS. IT WILL DAMAGE THE CONTROL BOARD.

Refer to the full schematic for further details.

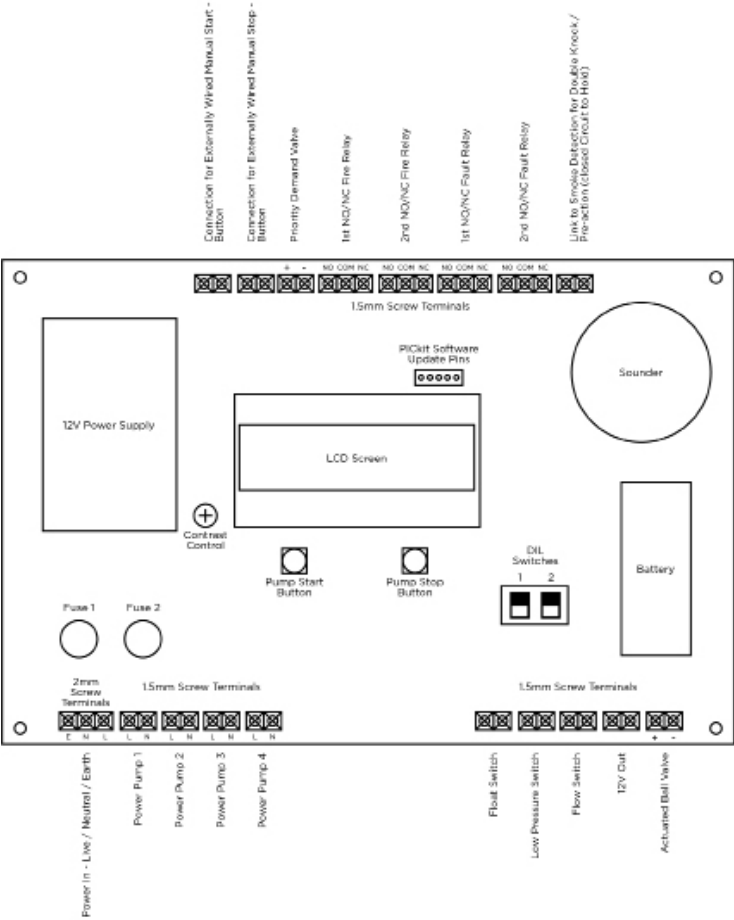


When using this facility, fire detection should be installed in every mist protected room. The fire alarm should be designed, installed and maintained by a competent company. Every fire alarm device should be tested to ensure that signals between the mist and fire alarm equipment operates as expected. It is the responsibility of the mist installer to prove these connections work during commissioning and maintenance.

The diagram below shows the wiring connection to an Aico Ei129 hard Wired Switched Input Module.



Control & Monitoring Board



Accreditations

iCO Products® is ISO9001 accredited for the manufacture of water mist fire suppression systems and meets the fire safety and performance requirements of BS:8458 residential water mist standards.

All of our fire suppression products are manufactured in the UK and independently tested to the highest performance and safety standards to protect you and your home in the event of a fire.

iCO Products® is a member of both the Fire Protection Agency (FPA) and Fire Industry Association (FIA). Our patented products have gained LPCB certification from the Building Research Establishment (BRE).



A smarter and safer means to protecting lives and property from fire.

iCO Products is LPCB ISO 9001 accredited for the design, manufacture, assembly, and testing of residential fire suppression products.

Our patented fire suppression products are manufactured in the UK and sold through a network of accredited installers and distributors throughout the UK and overseas.

Patents granted: United Kingdom, USA, Australia, Europe

Patents pending: UAE

Contact us

@ enquiries@ico-products.com

🖱️ ico-products.com

📌 [@ico-products](https://www.linkedin.com/company/ico-products)

📍 iCO Products Ltd.
Unit 9
Cordwallis Business Park
Clivemont Road
Maidenhead
Berks
SL6 7BU



iCO Products is a member of the Fire Industry Association and an ISO 9001 registered company.

We reserve the right to update or modify any information. All values, information, images and illustrations in this brochure, data sheets and all other publications are exemplary and are subject to on-going changes and updates.

